



**Congratulations
On Your New Dock !**

STATIONARY DOCK
QP-400 Model

(#21011)

Assembly guide



Toll-free help line : 1-800-585-1237 | info@multinautic.com

THE QP-400 CONTAINS:

TOOLS NEEDED:

- 3/4 in. and 7/16 in. wrenches
- Star screwdriver
- Cordless drill with 1/2 in. and 9/64 in. drill bits + #2 square bit
- Sledgehammer

REQUIRED MATERIALS:

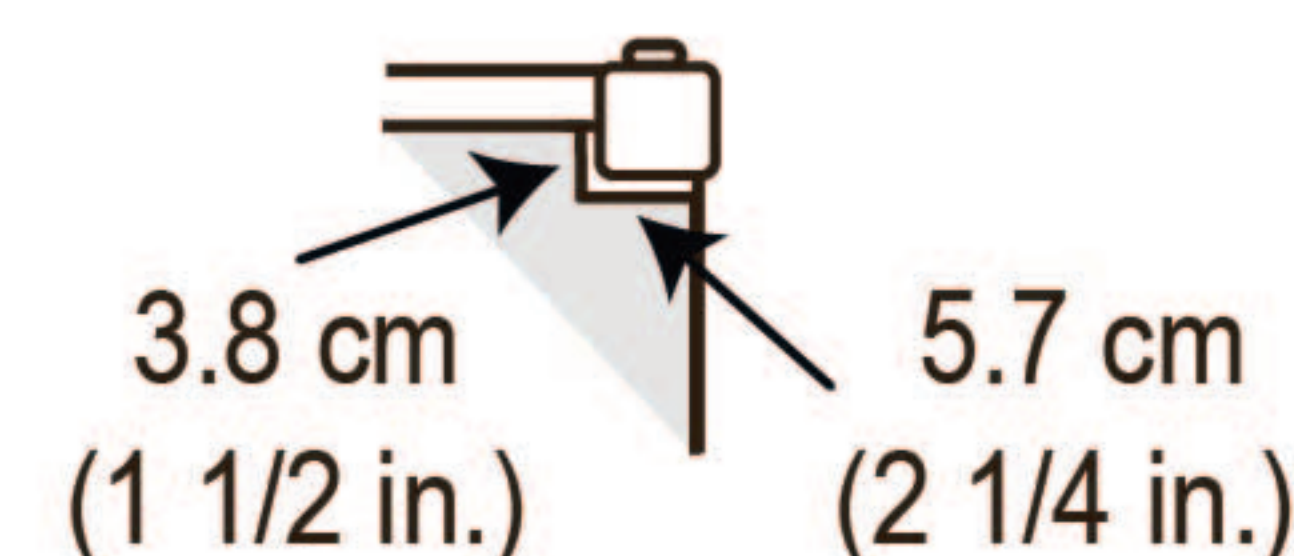
- **70 1 3/4 in. #8 wood screws**

- **10 cedar planks:** *nominal size: 5/4 in. x 6 in. x 8 ft. (actual: 1 in. x 5,5 in. x 8 ft.)*
actual size: 25 mm x 144 mm x 2.43 m

> **8** of the planks to be cut into 16 planks of 118.6 cm (46 11/16 in.) each. Read STEP 7.

Note: both end planks must be cut to fit around leg holders. See image beside.

> **2** boards to be kept full length 2.43 m (8 ft) for decking supports.



INSTALLATION REQUIREMENTS

- A fixed dock is ideally suited for water depths under 1.3 m (4 ft).
- A fixed dock is not made to withstand pressure or tension caused by moored boats in agitated waters. We recommend separated mooring systems; deadman blocks, chains and mooring buoys.
- In rough condition areas, or if piles are used to their full lengths, you should increase the dock's stability by adding diagonal braces to the posts (item # 22034).
- Have two strong adults to assemble frame. Install decking while on solid ground, then bring dock to water to install on piles.

SAFETY FIRST

Our MULTINAUTIC® team of professionals has designed and engineered the best lightweight aluminum dock available. Please read these instructions before assembling your new dock, to ensure that assembly is done safely and correctly.

- All bolts and nuts are tightened securely before using your new dock.
- **DO NOT** modify this dock system, as alterations or welding can weaken the structure and will void the warranty.
- Always wear personal safety protection such as safety glasses, work gloves and boots.
- Keep children and pets clear of work area during assembly.
- Weight capacity of this dock structure will not support vehicles of any kind and is limited to 4 people or 363 kg (800 lbs).
- **DO NOT** use corded electrical tools in or near water.

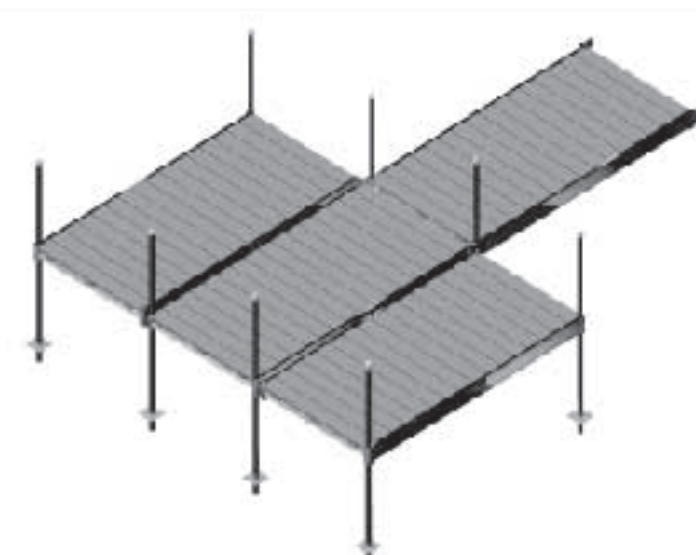
MAINTENANCE AND STORAGE

ALUMINUM FRAME: There is no maintenance required on the aluminum frame itself. Due to air and water exposure, a light tarnish may appear. Simply rub the frame with a Scotch Brite™ style pad to remove light scratches, though tarnish or light scratches will not affect the strength or integrity of the dock.

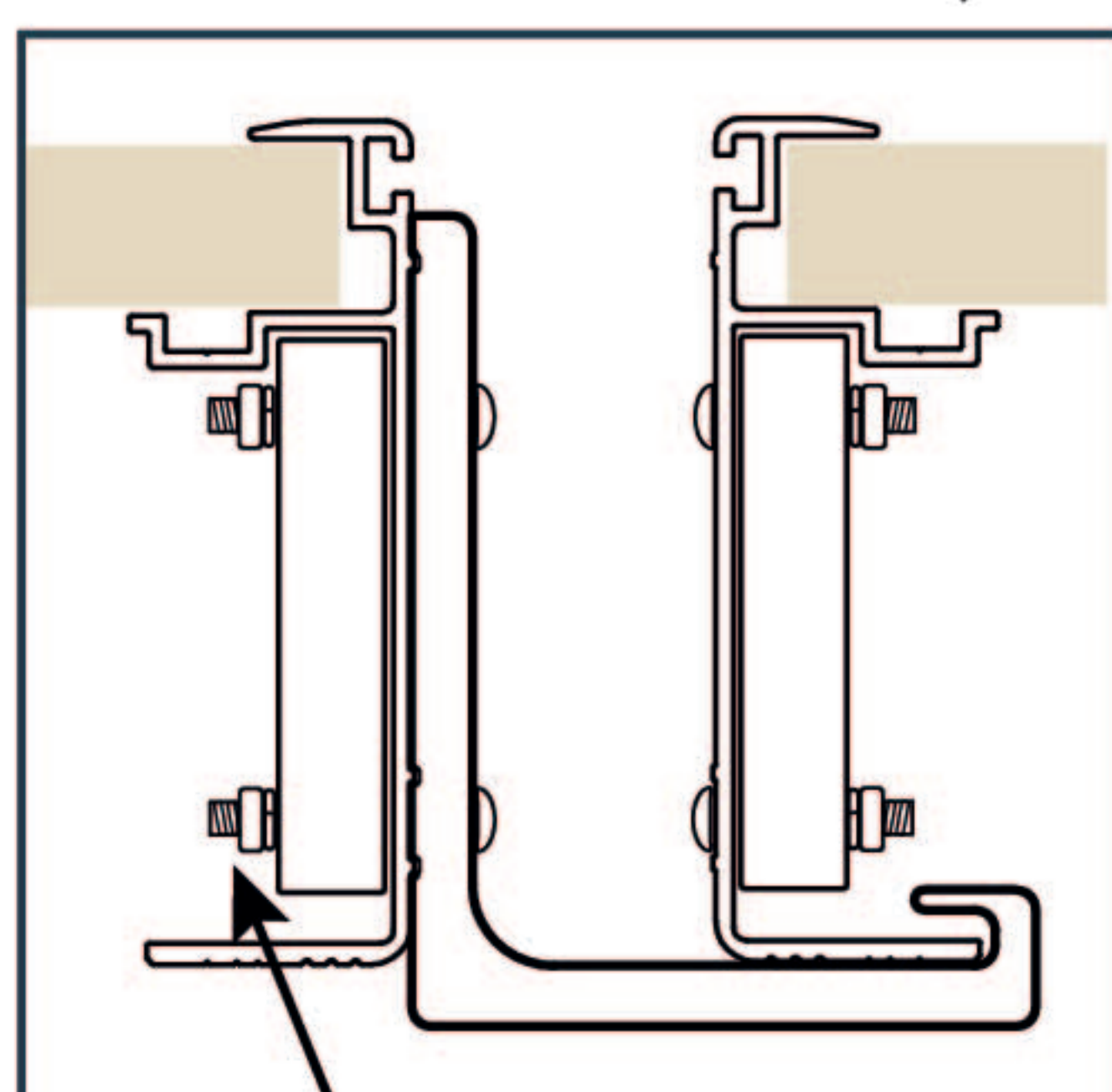
WOOD DECKING: –Important– Your aluminum frames should never come in contact with green treated wood. We highly recommend cedar, which is light and maintenance-free, and that you refer to your wood supplier if you want to apply a protective product.

Never leave post docks in the water in wintertime because of ice movements. When storing the docks, leave the decking in the aluminum structure. You may store them flat (upside down to prevent fading under the sun) or straight on their sides.

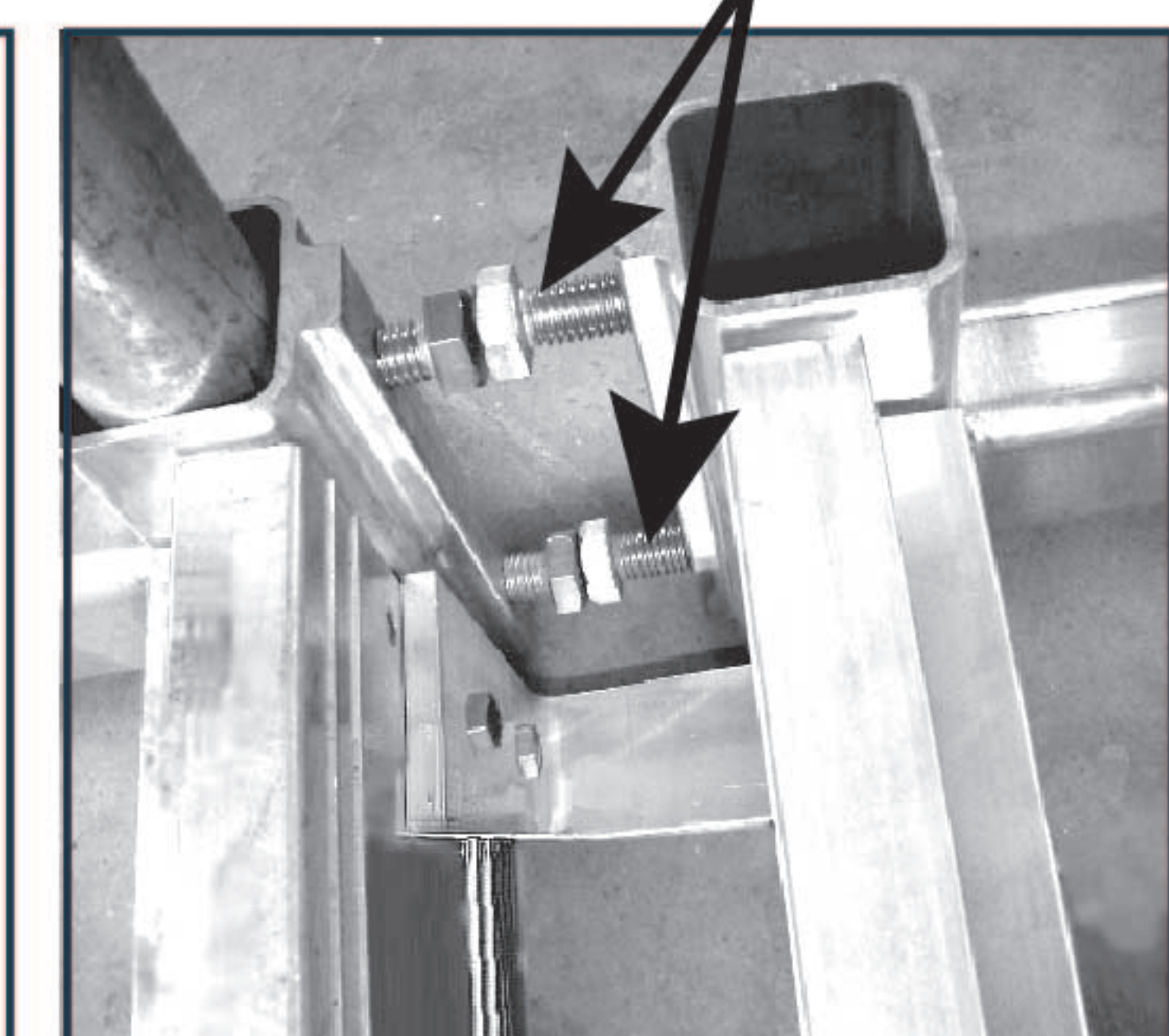
PARALLEL ADAPTOR



UNSCREW BOLTS OF THE DOCK WITHOUT LEG PILES TO LIMIT DOCK MOVEMENTS.



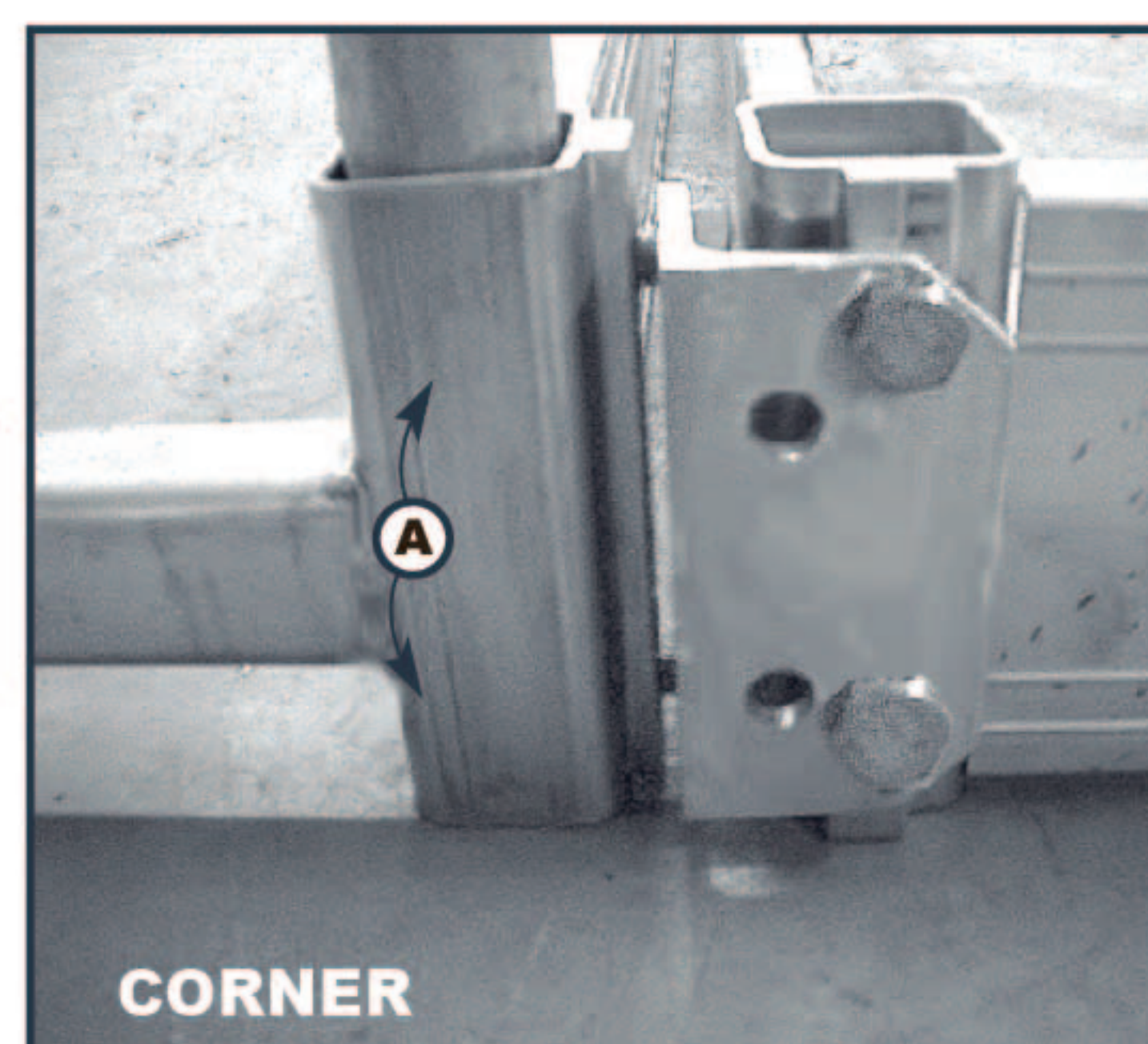
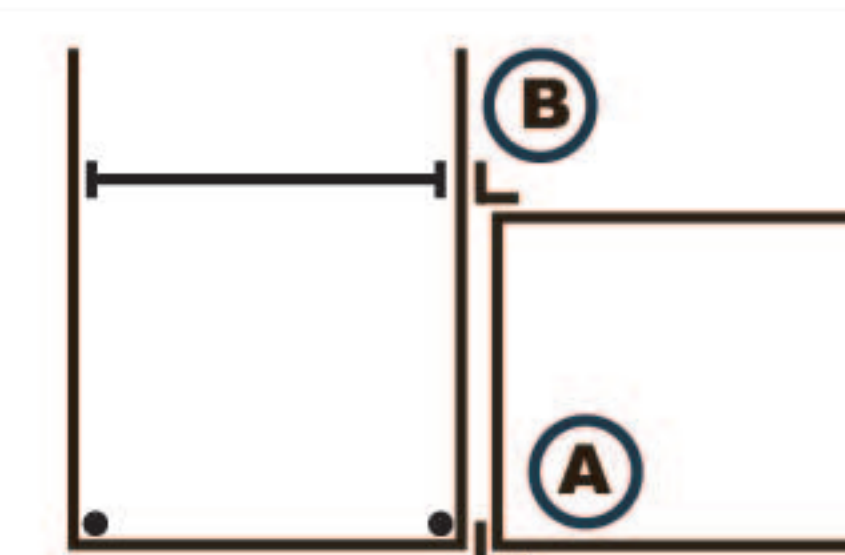
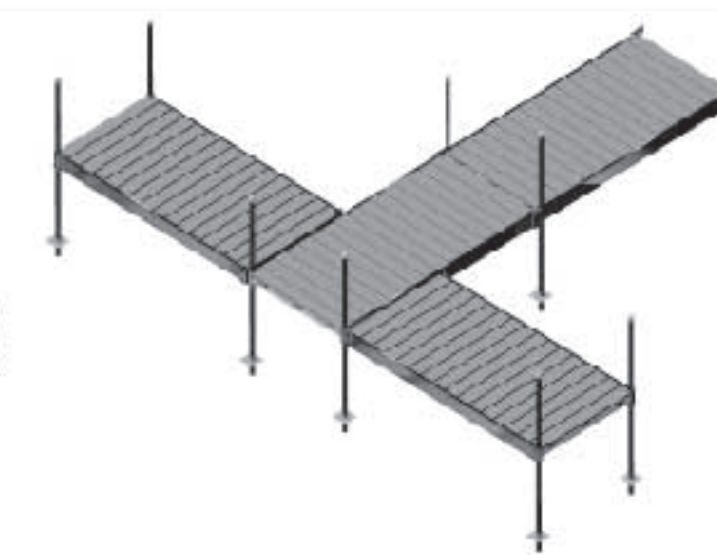
USE THE 2 in. LONG BOLTS SUPPLIED WITH THE ADAPTOR



TO REDUCE SPACE BETWEEN DOCKS, YOU MAY SCREW A 2 in. x 4 in. (44 mm x 95 mm) WOOD BOARD ON A SIDE.



LATERAL & CORNER ADAPTOR



CORNER



SEE NOTE BELOW

SIDE

NOTE: YOU WILL NEED TO REDRILL THE 2 DOCK'S HOLES (B) WITH 1/2 in. DRILL BIT IN ORDER TO INSTALL THIS LATERAL ADAPTOR AND USE THE 1/2 in. x 1 in. BOLTS SUPPLIED WITH THE PART.

DOCK FRAME ASSEMBLY

STEP 1 Place the 2 side extrusions on a flat surface (decking support lip on top). Insert central support with 1/4 in. x 5/8 in. bolts. Be sure there are 2,5 cm (1 in.) from top of support lip to top of square tube. For now, tighten bolts by hand. Final tightening will be done when assembly is complete.

STEP 2 Insert and bolt in the 2 end pieces with 1/4 in. x 1 1/4 in. bolts by hand (longer part of leg holder on top). You can now tighten all assembly bolts (BEWARE, aluminum is soft – DO NOT over-tighten).

STEP 3 Apply grease on the threads of the 1/2 in. x 1 in. bolts and install them in 2 end corners. Slide in leg piles to required height, but tighten only lightly as you will need to readjust once in water. Install junction plates to the dock end opposite to posts.

STEP 4 Install base plates on leg piles, leaving approximately 15 cm (6 in.) under the plate (a little more is required for soft lake bottoms, a little less when lake bottom is very hard). Tighten securely.

STEP 5 Before installing decking, check squareness of the structure once again so that 118.6 cm (46 11/16 in.) decking planks will easily insert in openings at both ends and in the middle.

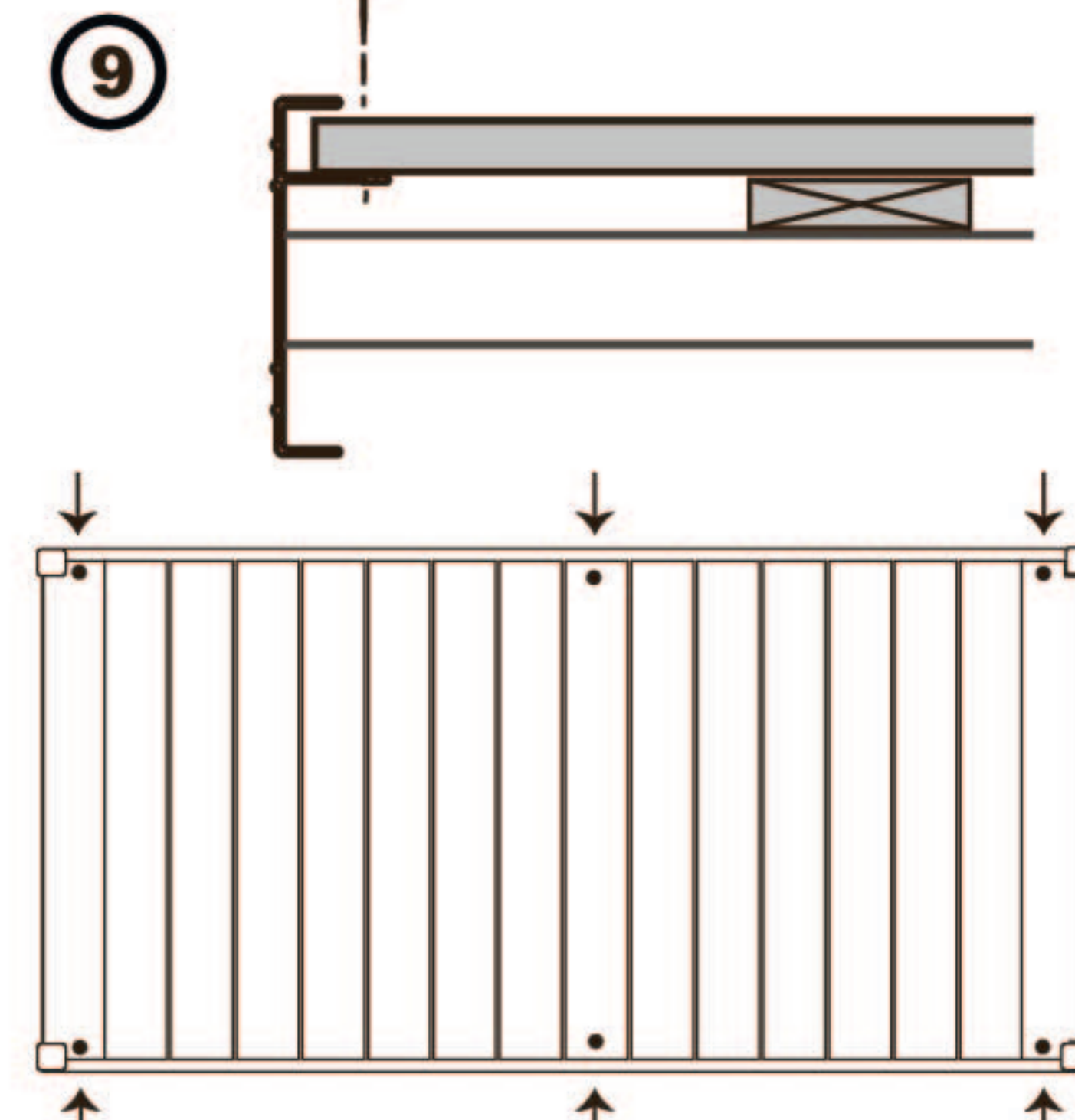
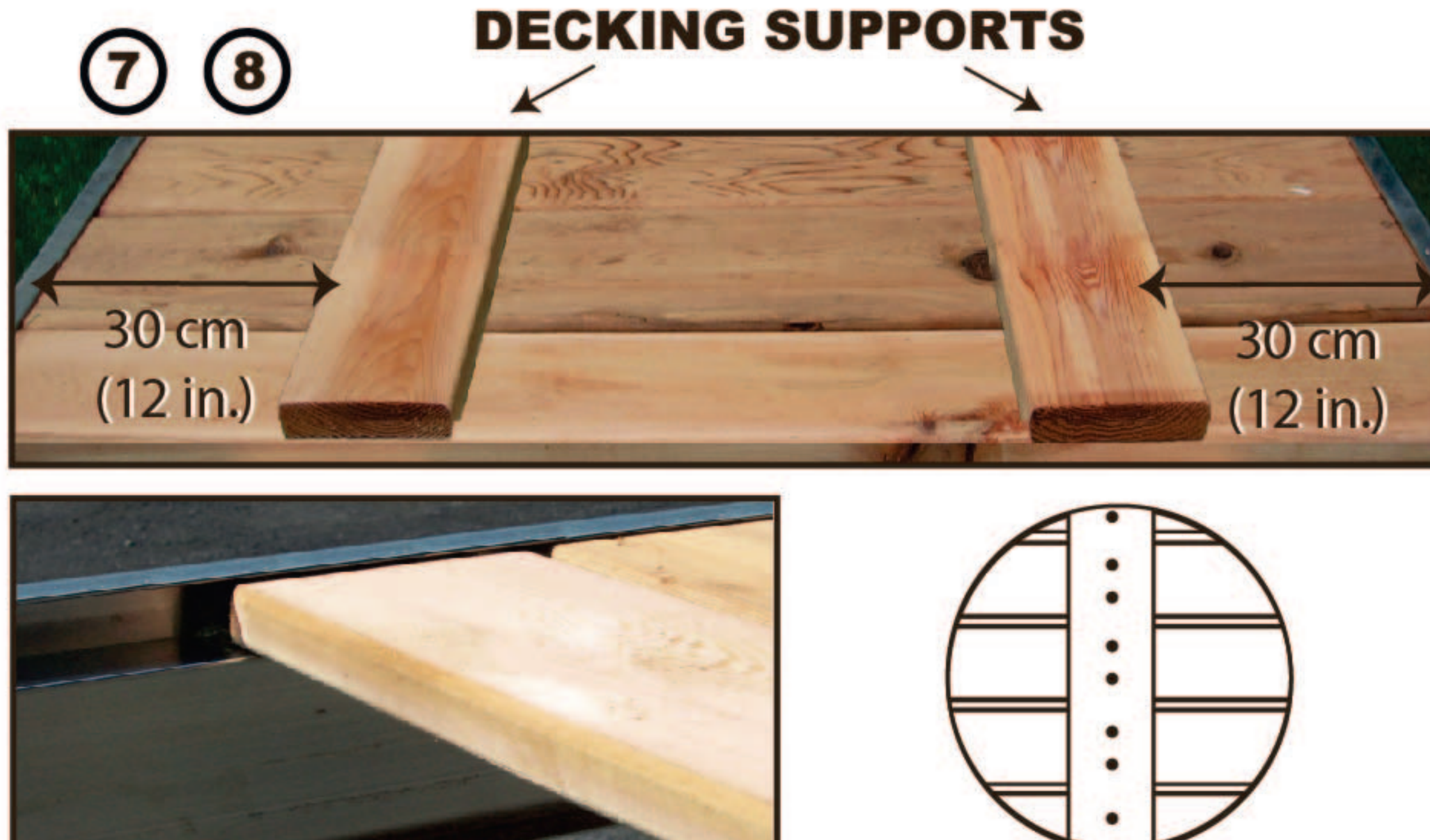
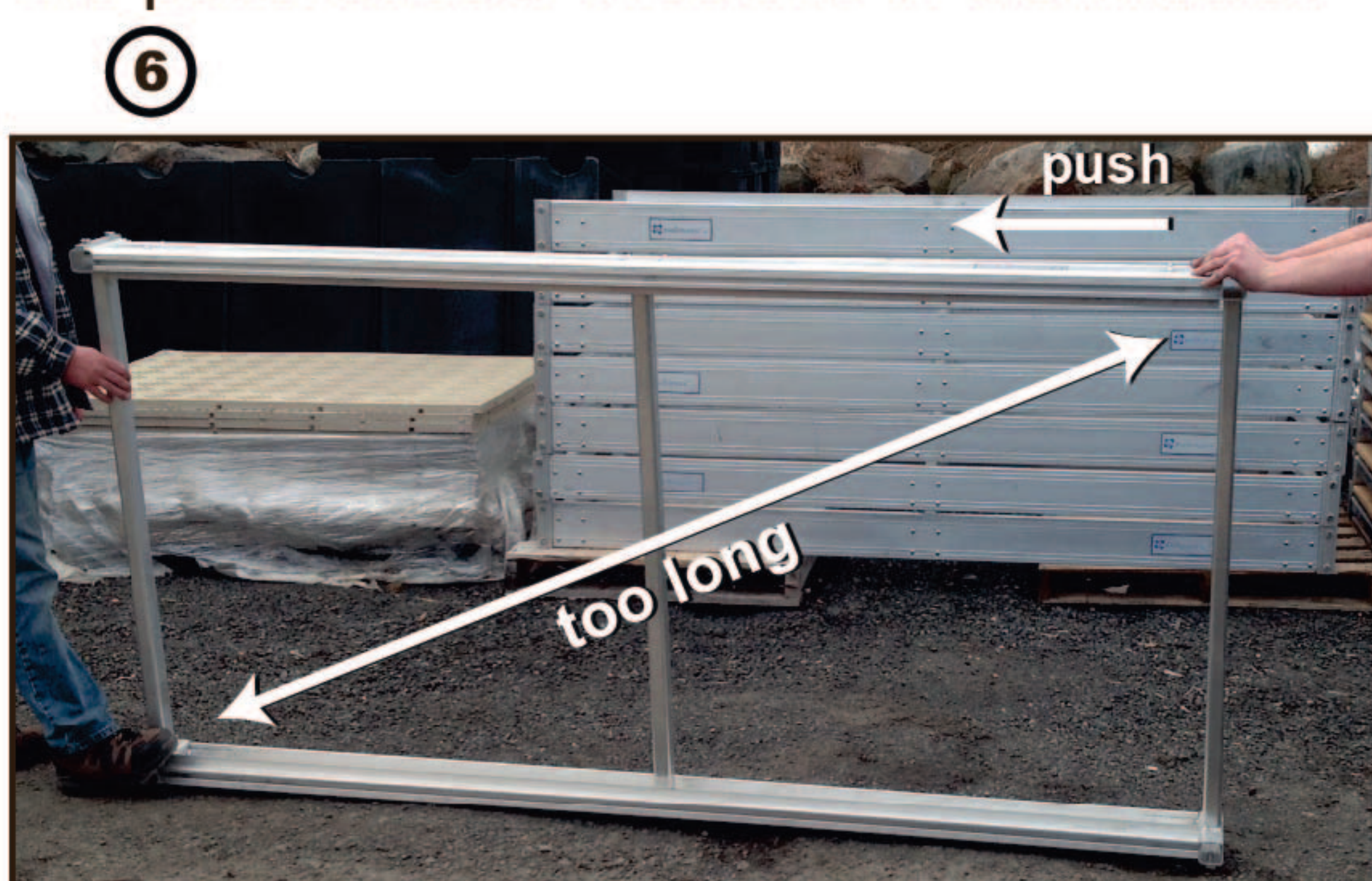
DECKING ASSEMBLY

STEP 6 Once the dock frame assembly is put together, install it at about the height of a table with 4 leg piles, checking the squareness of the structure by taking an “X” measurement from corner to corner. The dimension should be the same as +/- 4 mm (1/8 in.). If the measurements differ push on the longest part of the frame in order to correct and make sure that they remain as is when assembling the decking. If the structure doesn't keep its square shape, tip it on the side and push in one of the corners.

STEP 7 Install the planks with the smooth (best) side down flush into the dock side support lips (you will assemble the decking panel upside down in order to facilitate your work and you'll flip it back later). Align all on one side of the dock, and leave an equal space between each board (approximately 1 cm (3/8 in.) between each plank). You may use 17 decking boards instead of 16 for smaller gaps between boards as Multinautic®'s Cedar Decking Kit, #21175.

STEP 8 Once all is positioned flush on one side, place the two 2.4 m (8 ft.) decking support planks at about 30 cm (12 in.) from the sides and screw in place. You should pre-drill the supports with 9/64 in. bit to prevent cracking. Ensure that no spaces are created between wood supports and decking boards when adding the screws.

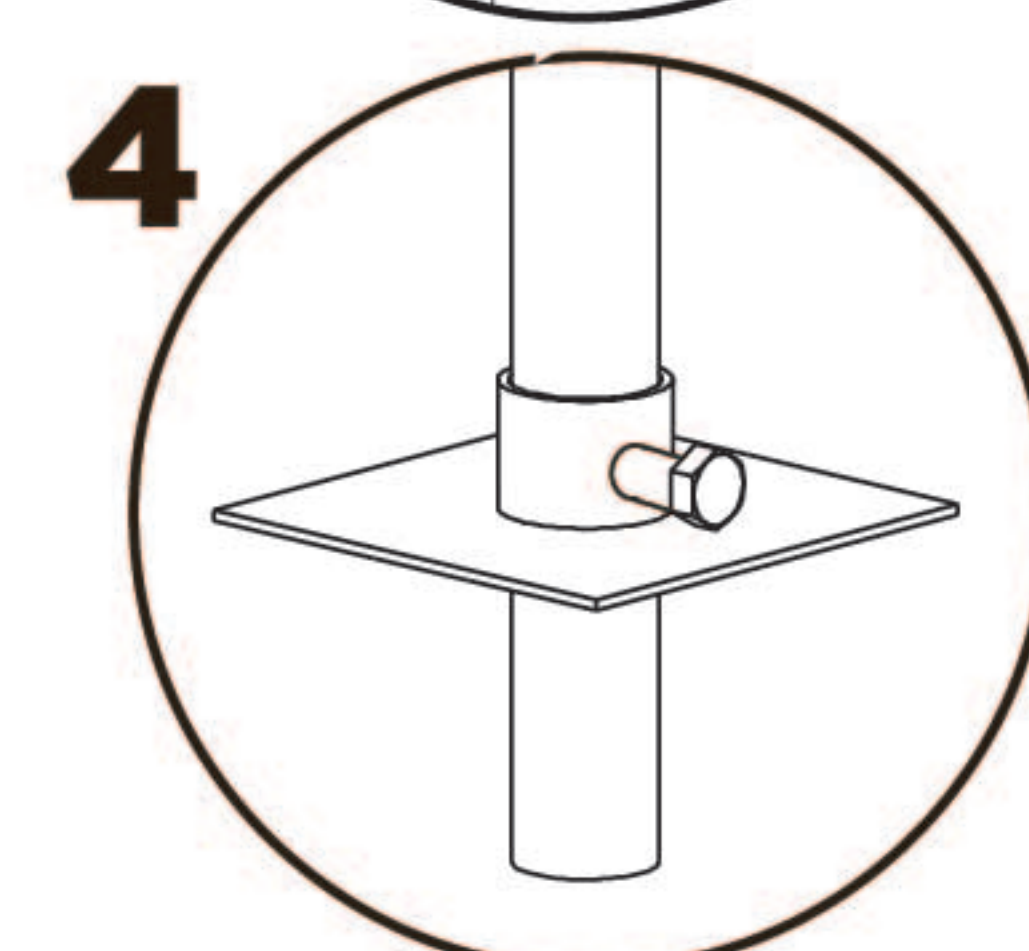
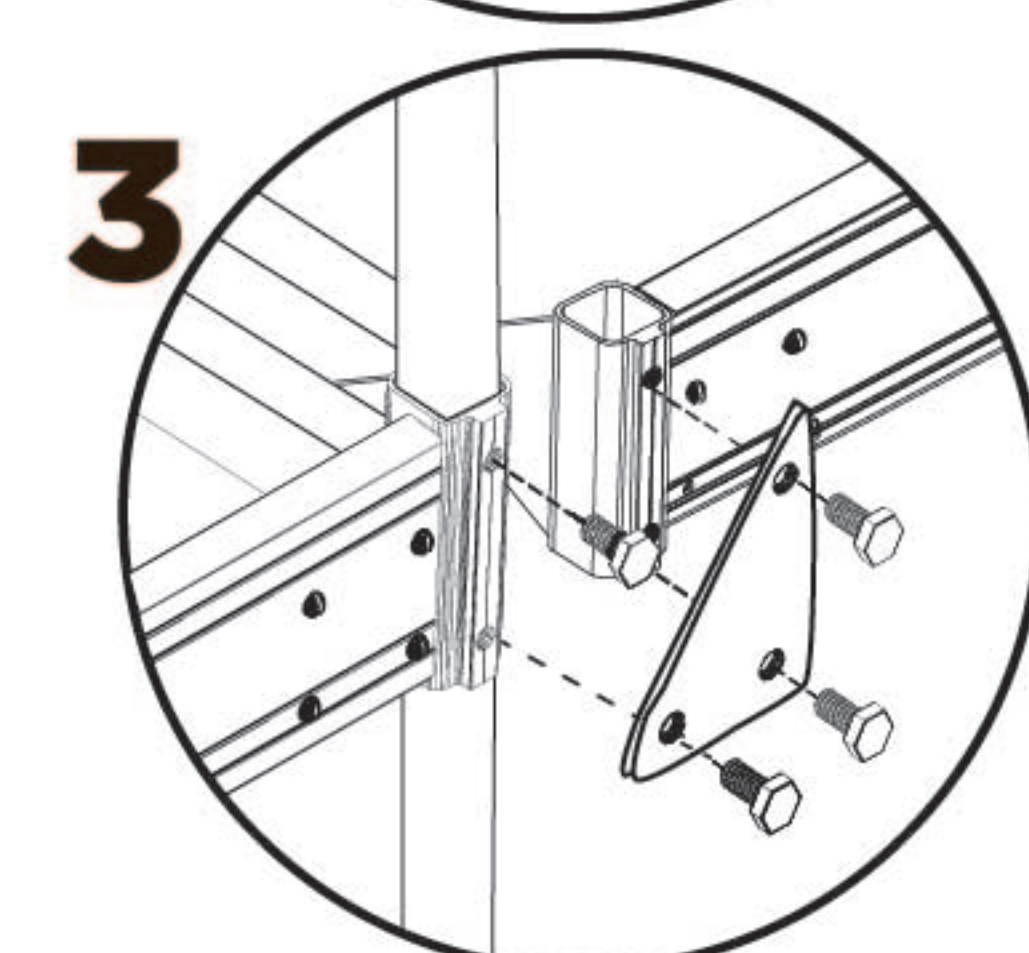
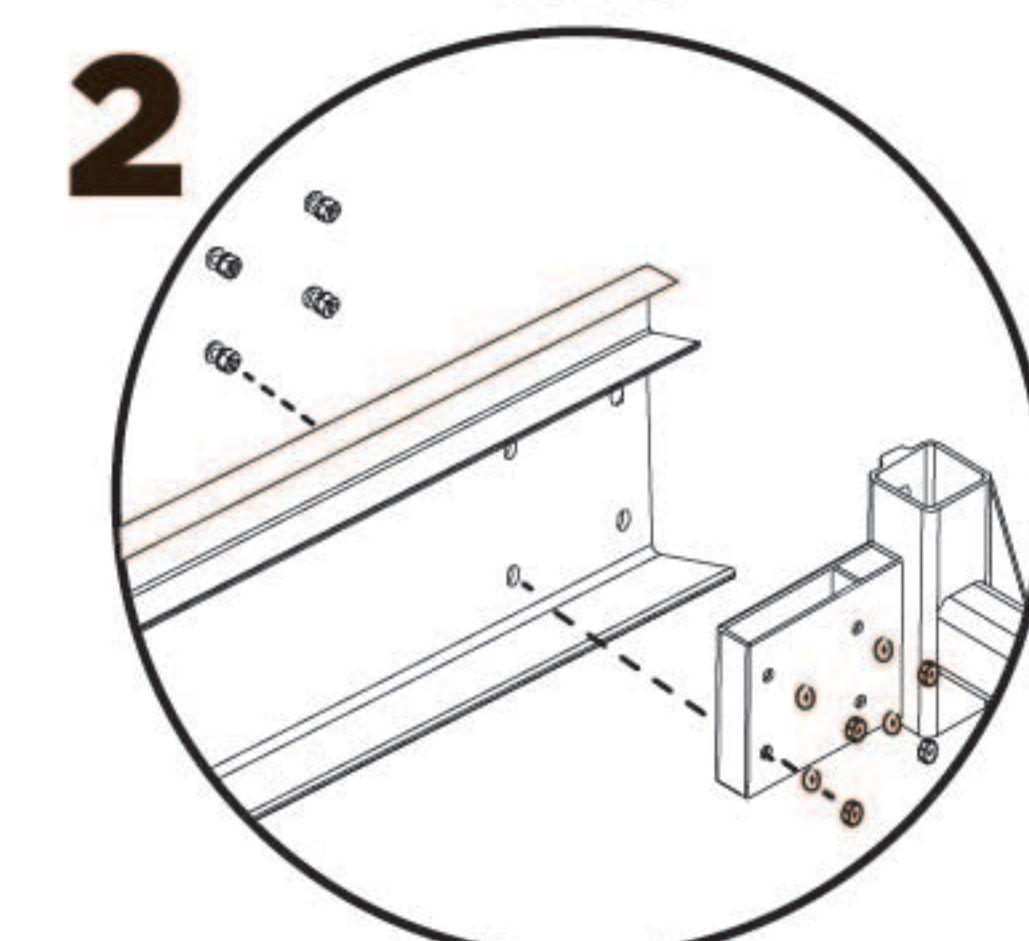
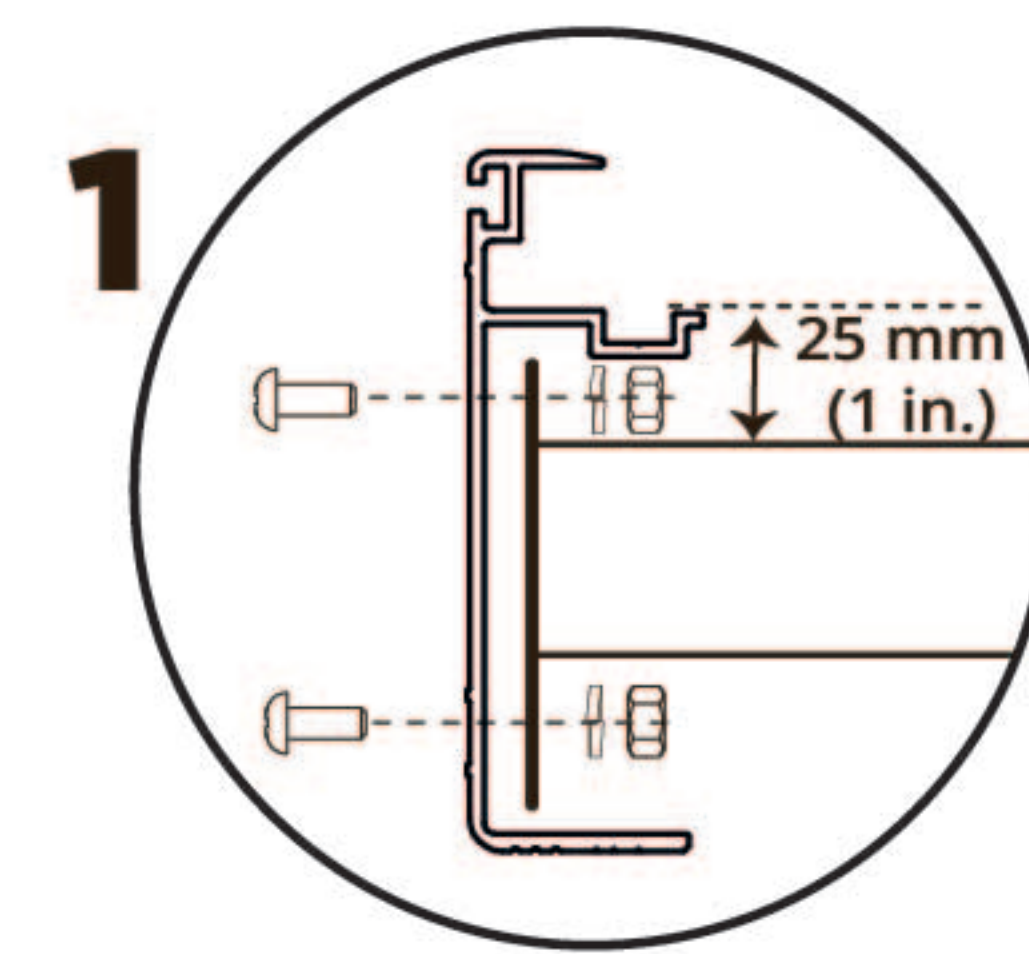
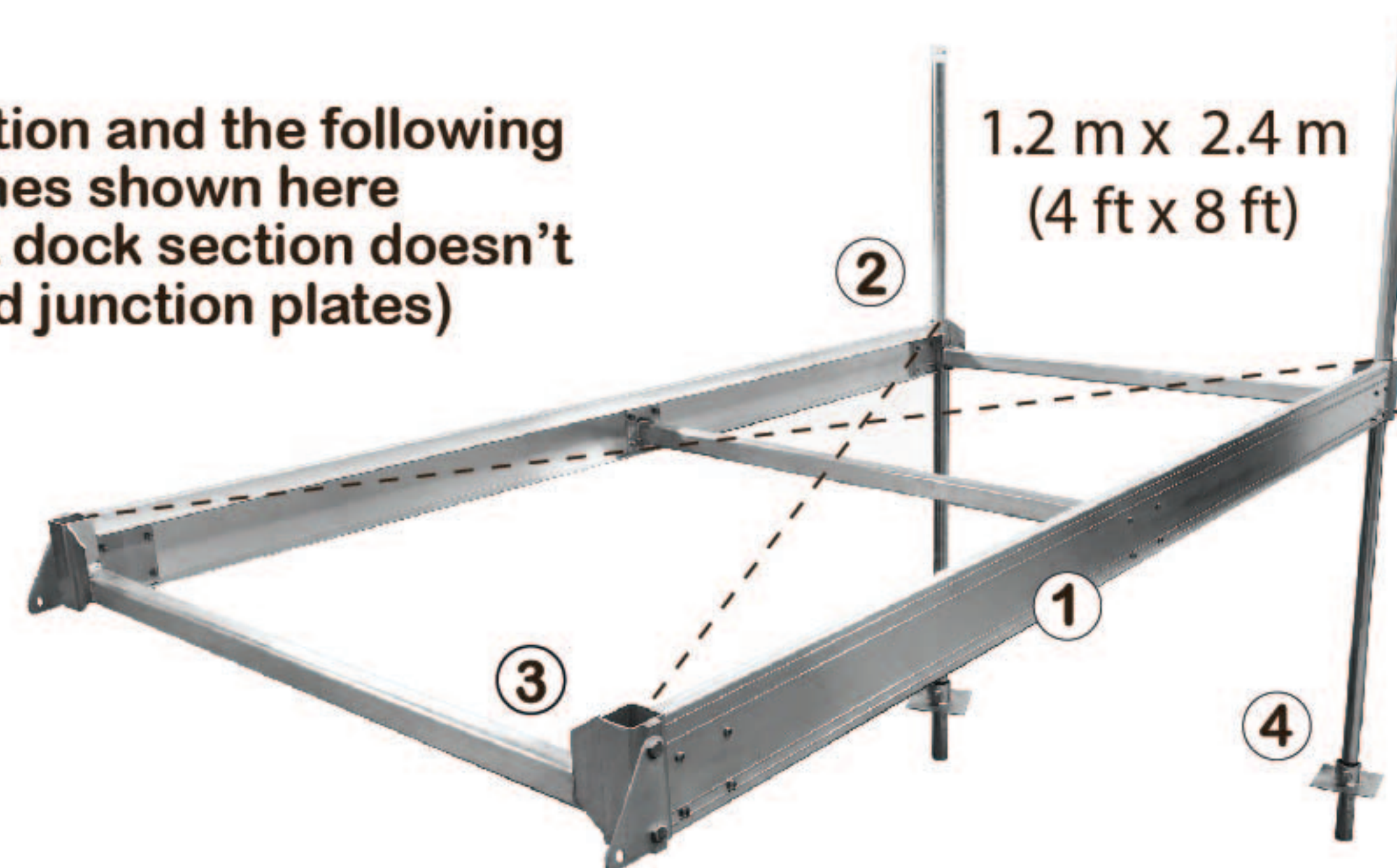
STEP 9 Once your panel is completed, flip it over and centre it equally on each side. Drill six 9/64 in. holes and screw the panel at both ends and in the middle.



INSTALLATION

Lay the first dock section on your shore, 'postless' end on ground and 'posts' end in water. Pound posts so the base plates properly sit into lake bottom. Using the upper bolts on the leg holders, adjust the dock to desired height. Bottom bolts will be used to set the other dock section. Repeat to complete your dock layout. A distance of about 35 cm (14 in.) with water is recommended. If desired, cut the top part of your leg piles to the same height (keeping in account seasonal water fluctuation), then add PVC caps.

2nd section and the following ones shown here (the first dock section doesn't need junction plates)



Quality Accessories for your QP-400 Post Dock :

4-step Aluminum Dock Ladder

- Large 44 cm x 12.7 cm (17 1/4 x 5 in.) deep step with plastic end caps
- Nice 3.8 cm (1 1/2 in.) aluminum handrails
- Clean and sturdy: will support a 113 kg (250 lb) load
- Stainless-steel assembly hardware included
- Compatible with additional step (#15528) and flip-up kits.

Includes 3 easy-to-assemble sections:

2 handrails and 1 step section

Step-by-step installation guide in the box.

15524



Flip-up Dock Ladder Kit

Turns a ladder into a flip-up so you can take it out of the water when needed.

Designed for our dock ladder #15524.

Will need modifications if added to another ladder model.

15529



Premium Boat Fenders

UV and fungus protection treatment.

Equipped with an inflation valve to adjust firmness.

Available in different sizes.

Twin eyes or center hole type.

May be installed horizontally or vertically.



White PVC Bumper

Non-marking premium PVC.

UV and fungus protection treatment.

Prevents damage to boats during docking.

Long lasting. Easy care and cleaning.

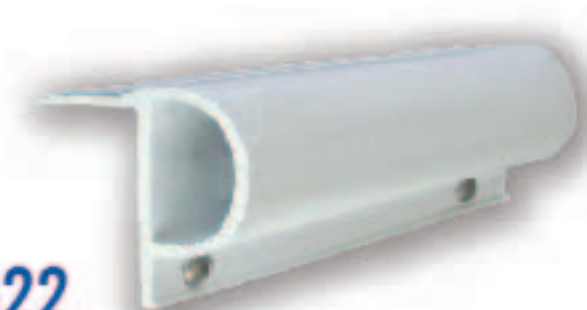
Small P shape

Three 2.44 m (8 ft) lengths

Small D shape

Two 4.88 m (16 ft) rolls

10522



10520



Corner Pile Bumper

To be installed on leg pile at the end corners of the dock to protect boats from contact with the metal dock pipe and hardware at dock level.

Rests securely against the dock.

Has an inflation valve to adjust firmness.

18 cm x 43 cm (7 x 17 in.)

15014



Wheel Kit

For easy dock-in and out.

Included:

2x plastic dock wheels – 61 cm (24 in.)

2x wheel axles – 26.7 cm (10 1/2 in.)

2x hitch pins

2x large flat washers

22000

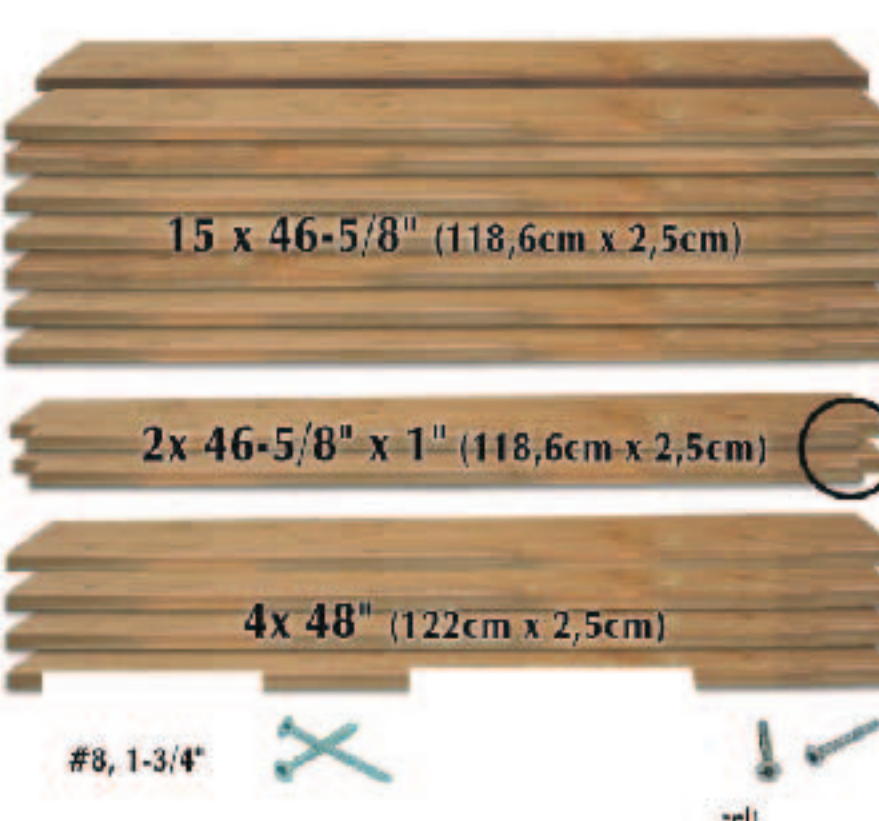


QP-400 Cedar Decking Kit

Red western cedar (cut to size) and the screws needed to assemble one

Multinautic® QP-400 dock section.

21175



Printed in Vietnam

Ask your retailer about our kayak rack and paddle-board support kits !



Limited warranty

Multinautic® hereby warrants to the original consumer purchaser only that this product will be free, in normal use, of any defects in materials and workmanship for a period of one (1) year from the consumer's original date of purchase directly from Multinautic® or from a Multinautic® authorized reseller. At its sole option, Multinautic® will repair or replace the defective product and promptly return it to you. In order for this warranty to be valid, the consumer must, at the time the product is returned, provide proof of purchase in the form of the original purchase receipt directly from Multinautic® or from a Multinautic®-authorized reseller. If Multinautic® elects to replace the defective product, then Multinautic® reserves the right to replace the defective product with another product of the same model or a model of at least comparable quality and features in Multinautic®'s sole determination. A reimbursement cannot exceed the amount paid by the customer and is limited to the replacement of the defective product.

If you believe this product is defective within the warranty period, call Multinautic® for a Return Authorisation Number (RAN), carefully repack the unit, insure it and return it with proof of purchase, postage prepaid, to Multinautic® at 2330, Jean-Adam, St-Sauveur, QC, Canada, J0R 1R2. Write the RAN on the shipping label. Any product sent without RAN will be refused and returned freight collect to sender.

This warranty is not transferable. This warranty does not apply in cases of abuse or misuse of the product, use contrary to Multinautic®'s instructions, an act of God, negligent use, purchase from a party other than a Multinautic® authorized reseller, unauthorized repair, or modification of the product.

ALL IMPLIED WARRANTIES OF MERCHANTABILITY OR FITNESS FOR A PARTICULAR PURPOSE ARE HEREBY DISCLAIMED TO THE EXTENT PERMITTED UNDER APPLICABLE LAWS AND, TO THE EXTENT NOT PERMITTED, ARE HEREBY LIMITED TO THE DURATION AND TERMS OF THIS WARRANTY. MULTINAUTIC® ALSO HEREBY DISCLAIMS ALL LIABILITY FOR INCIDENTAL, SPECIAL, OR CONSEQUENTIAL DAMAGES.

Some provinces do not allow limitations on how long an implied warranty lasts, or the exclusion or limitation of incidental or consequential damages, so the above limitation may not apply to you. This warranty gives you specific legal rights, and you may have other rights which vary from state to state or province to province. This warranty does not restrict the rights of the consumer mandated under applicable laws. **THIS WARRANTY SUPERSEDES ALL OTHER WARRANTIES THAT ARE ASSOCIATED WITH THIS PRODUCT.**

Multinautic®, property of MultiOnline Distribution Inc®.

2330, Jean-Adam, St-Sauveur, QC

Canada, J0R 1R2

www.multinautic.com

info@multinautic.com



Should you encounter any difficulties with this product, do not return it to the store.

Please contact our customer service at

1-800-585-1237 toll-free