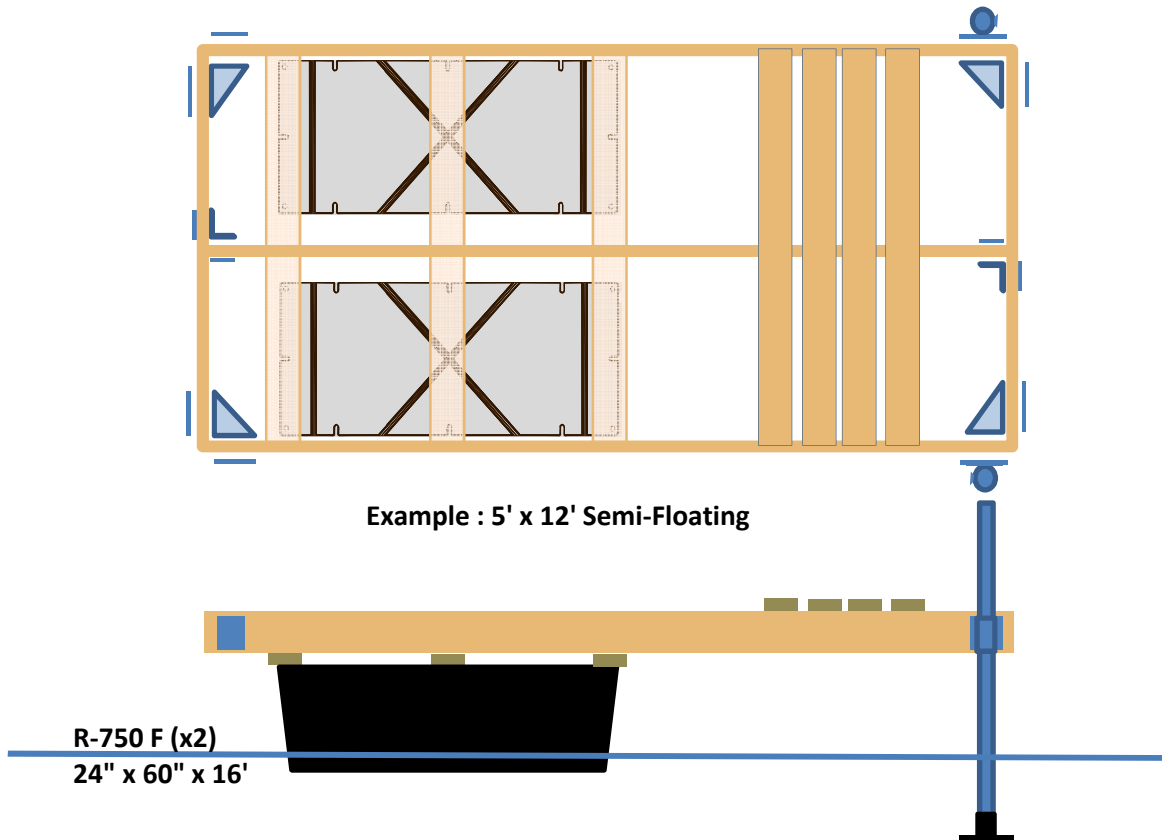


KIT # 19385
**High Freeboard
Possible to make**

5'x12'	5'x16'
6'x12'	6'x16'

HARDWARE		Size	Qty	Check
Kit 19160	19160		1	
	13305	Inside corner	6" x 5" x 1/4"	4
	13300	Back Plate	5" x 5" x 1/4"	6
	10002	Joist corner	2-3/4" x 5" x 1/8"	2
	10003	Back plate	2" x 5" x 1/8"	4
	22100	Bag of bolts for #19160		1
Pick	11104	Side leg holder w/anchor-chain for 2" pile	6" x 7" x 3/16"	2
	11006	Leg pile 4'	4' x 1-11/16"	2
	15005	Safety pile cap white	1-11/16"	2
	11107	Base plate galv. 6"x6"	6" x 6" x 1/8"	2
	22163	Bag of 12 lag bolts 3/8x4-1/2 galv + 2in. flat washer		1
	22170	Bag of 50 #10x3-1/2 treat.wood screws		1
	22172	Bag of 100 #10x3-1/2 treat.wood screws		2

FLOATS				
14010	R-750 Foam filled	24"x60"x16"	2	



Weight with pallet 201,93 LBS

Date:	Checked by:	Prepared by:
-------	-------------	--------------

Accessories available in option, consult our catalog or website. Multinautic 450-227-6217

Lumber needed according to Dock size

19385

2" x 6" Cedar, Hemlock or Treated Wood

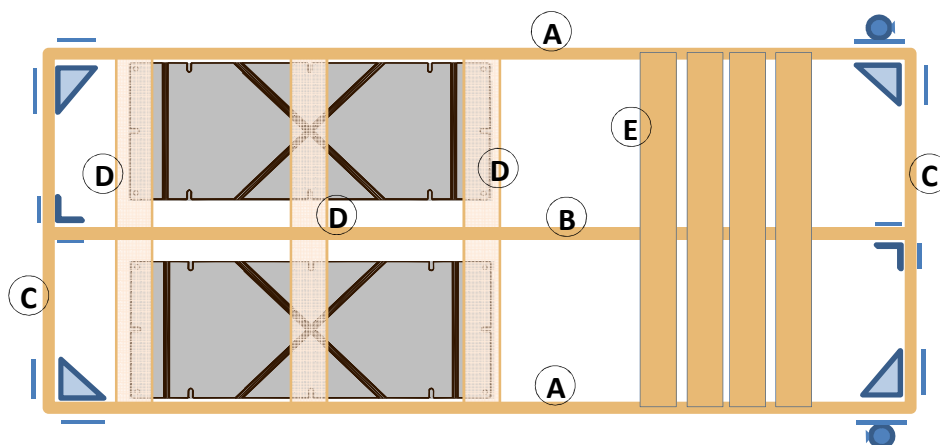
Lengths of wood needed from the hardware store		5' x 12'				6' x 12'	
			qty				qty
		2"x6"x12ft	3			2"x6"x12ft	18
		2"x6"x10ft	15				

Dimensions of the Wooden parts		5' x 12'				6' x 12'	
			qty				qty
Side pieces	A	144"	2			144"	2
Interior joists	B	140-3/4"	1			140-3/4"	1
End pieces	C	56-3/4"	2			68-3/4"	2
Floats supports	D	60"	3			72"	3
Decking boards	E	60"	25			72"	25

Lengths of wood needed from the hardware store		5' x 16'				6' x 16'	
			qty				qty
		2"x6"x16ft	3			2"x6"x16ft	3
		2"x6"x10ft	19			2"x6"x12ft	19

Dimensions of the Wooden parts		5' x 16'				6' x 16'	
			qty				qty
Side pieces	A	192"	2			192"	2
Interior joists	B	188-3/4"	1			188-3/4"	1
End pieces	C	56-3/4"	2			68-3/4"	2
Floats supports	D	60"	3			72"	3
Decking boards	E	60"	33			72"	33

* Wood is a natural product with variable thickness, some measurements must be validated and adjusted as needed



Example : 5' x 12' Semi-Floating

Do you have questions or have a problem?

Our technical team is here to help you in any way they can.